

Quick, Efficient Controller Setup with Data-Logging Capabilities

Searching for a quick, efficient way to set up your controllers? Need rapid data-logging and graphing capabilities? We have the answer: WATVIEW.

WATVIEW is Watlow Anafaze's HMI (Human/Machine Interface) software designed to set up and monitor one or more Watlow controllers. With easy controller setup, a recipe and alarm manager, data-logging and trend plot graphing capabilities, animated custom overview screens and a superior online help system, you can be assured that WATVIEW is the ideal software for your application.

WATVIEW is available in three editions:

- **Run-Time Edition**
Provides trend plot graphing, setup screens, data-logging, recipe manager with calendar-start, spreadsheet data editor, system activity log, and alarm manager. The Run-Time Edition displays custom screens created with the Developer Edition.
- **Developer Edition**
Includes all functions of the Run-Time Edition plus a custom screen designer and user-defined variables.
- **Configurator Edition**
Includes only spreadsheet data editor, recipe manager without calendar-start, and system activity log. The configurator edition is available free of charge at www.watlow.com

Features and Benefits

Easy Controller Setup

- WATVIEW automatically detects which controllers are connected to the computer, then WATVIEW loads the appropriate setup screens for those controllers. Use built-in setup screens to adjust the controller parameters, or the simple "spreadsheet view" for a quick, intuitive interface. The spreadsheet categorizes all controller parameters according to their parameter groupings.

Recipe Manager

- All editions of WATVIEW include the ability to create recipes. Use recipes to store commonly used controllers settings, to speed up repetitive controller setups, and to create a "snapshot" of your setups. The Run-Time and Developer Editions also include a calendar-start function, allowing users to automatically download recipes on a one-time or repeating schedule.
(continued on next page)



WATLOW
ANAFAZE
Better Thermal Solutions...*Faster*

ANA-WTW-0806

1241 Bundy Boulevard, P.O. Box 5580
Winona, Minnesota 55987-5580 USA
Phone: +1 (507) 454-5300
FAX: +1 (507) 452-4507
Internet: www.watlow.com
e-mail: info@watlow.com

ISO 9001



Registered Company
Winona, Minnesota USA



Features and Benefits (continued)

Alarm Manager

- WATVIEW Run-Time and Developer Editions receive alarms from controllers, maintain a log of alarms, and allow users to clear and acknowledge alarms.

Data-Logging and Trend Plot Graphs

- WATVIEW Run-Time and Developer Editions include continuous data-logging of the parameters you choose. You can export the collected data to an Excel®-compatible spreadsheet file, or view up to 20 data items on a WATVIEW trend plot graph. An unlimited number of graphs may be named and stored for simple future retrieval.

Colorful, Animated Custom Overview Screens

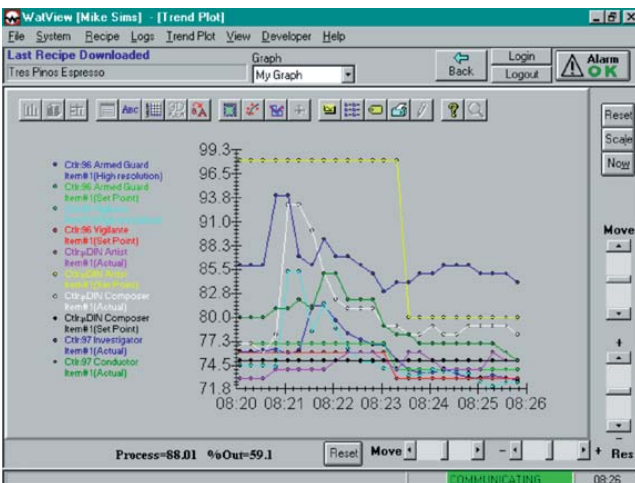
- Use WATVIEW Developer edition to create custom screens, easily! WATVIEW's Custom Overviews (COVs) incorporate your graphic images (such as digital camera photos) with real-time data from the controllers, to make a custom interface. You can also use WATVIEW's AnaMator program to create animated sequences, which can show your process in action. Custom Overview's created with the Developer edition can be used with any WATVIEW edition.

Superior Online Help System

- Use the online help to guide you through setup procedures and obtain detailed help for Watlow controllers.

Webserver for Windows® 2000 and XP Professional with Microsoft® Personal Webserver

- View data from WATVIEW in a standard browser
- Remotely access password-protected controller setup
- View trend graphs remotely



Excel® is a registered trademark of Microsoft Corporation.
 Windows® is a registered trademark of Microsoft Corporation.
 Microsoft® is a registered trademark of Microsoft Corporation.

Ordering Information

WV00 - 000 - 0000

Edition

- D = Developer
- R = Runtime

Key Type

- P = Parallel Port (LPT)
- U = USB

Specifications

Windows® XP and Windows® 2000 System Requirements:

- RAM: 128 MB
- 800 x 600 screen resolution
- 16-bit or higher color palette ("High Color")
- Serial communications (COM) or ethernet port
- Parallel or USB port
- 200 MB hard drive space
- CD-ROM drive or Internet connection (for installation only)

Controllers Supported:

WATVIEW supports the following controllers when equipped with the listed firmware revision or later:

- SERIES 96 (Rev. 1.20)
- SERIES 96 with ramping (Rev. 1.05)
- SERIES 97 (Rev. 1.10)
- MICRODIN™ (Rev. 1.01)
- CAS200 (Rev. 2.0)
- F4S/F4D (Rev. 2.06), F4P (3.00)
- CLS200 SERIES standard, enhanced, and extruder (Rev. 3.31), ramp and soak (Rev. 3.40)
- MLS300 SERIES standard, enhanced, and extruder (Rev. 3.31), ramp and soak (Rev. 3.40)
- CPC400 SERIES (Rev. 1.00)
- POWER SERIES (Rev. 1.00)
- SERIES SD controller (Rev. 4.00), profiling (Rev. 1.00), single-display controller (Rev. 2.00), limit (Rev. 2.00)

Note: See www.watlow.com/products/software/watview.cfm for the latest on supported controllers to download the latest version or get a free copy of the WATVIEW Configurator edition.

Your Authorized Watlow Distributor Is:

To be automatically connected to the nearest North American Technical and Sales Office call:

1-800-WATLOW2

International Technical and Sales Offices: Australia, +61-3-9335-6449 • China, +86-21-3950-9510 • France, +33 (01) 3073-2425 • Germany, +49 (0) 7253-9400-0 • Italy, +39 (02) 458-8841 • Japan, +81-3-3518-6630 • Korea, +82-2-575-9804 • Malaysia, +60-3-7980-7741 • Mexico, +52 (442) 217-6235 • Shanghai, +86-21-3950-9504 • Singapore, +65-6773-9469 • Spain, +34 916 751 292 • Sweden, +46 35-27-11-66 • Taiwan, +886-7-288-5168 • United Kingdom, +44 (0) 115-964-0777