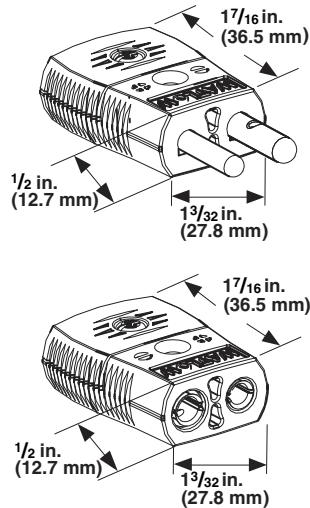


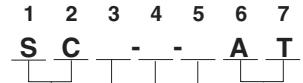
Accessories

Connector Systems

“S” SERIES Standard Connectors, 425°F



Ordering Information—To order, complete the part number on the right with the information below:



1-2. “S” SERIES Standard Connector, 215°C (425°F)

3. Style

- M = Male (plug)
- F = Female (jack)

4. Calibration

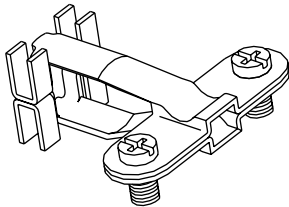
- E = Type E
- J = Type J
- K = Type K
- S = Type S/Type R
- T = Type T
- U = Uncompensated

5. Name Plate

- W = With Watlow name
- N = Without name label (For J and K calibrations only)

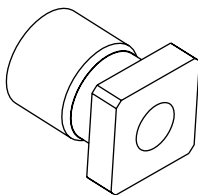
6-7. Color Code

- AT = ASTM E 230 color code/uncompensated = white

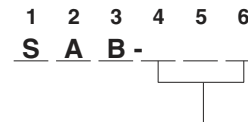


Cable Clamp Style for Male or Female

SAC-220

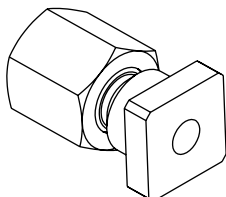


Crimp/Braze Style

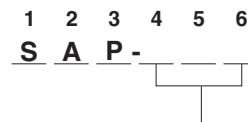


4-6. Sheath size

- 040 = 0.040 inches
- 063 = 0.063 inches
- 090 = 0.090 inches
- 125 = 0.125 inches
- 188 = 0.188 inches
- 250 = 0.250 inches
- 30M = 3.0 mm
- 60M = 6.0 mm



Compression Style



4-6. Sheath size

- 063 = 0.063 inches
- 125 = 0.125 inches
- 188 = 0.188 inches
- 250 = 0.250 inches
- 30M = 3.0 mm
- 60M = 6.0 mm

Note: All accessories subject to minimum purchase quantities.