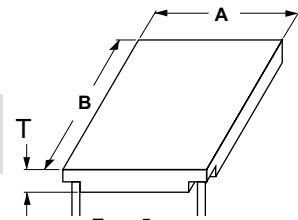


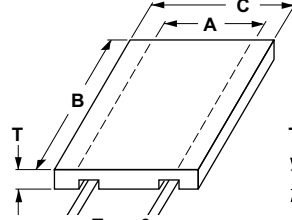
# Ceramic Fiber Products

## Ceramic Fiber Heaters

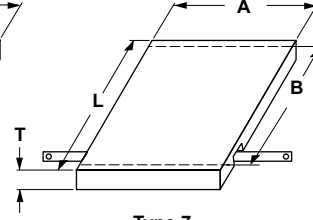
All units: T = 2 ± ¼ inches (51 ± 6 mm)



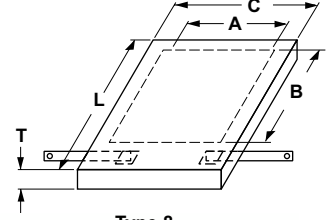
**Type 5 Fully Heated (Style A Leads Illustrated)**



**Type 6 Insulated Sides (Style B Leads Illustrated)**



**Type 7 Insulated Ends (Style C Leads Illustrated)**



**Type 8 Insulated All Edges (Style C Leads Illustrated)**

(Style A, B or C leads available on any type unit. Please specify.)

### Flat Units — Embedded Coiled Elements (see page 142)

Dimensions, inches (mm)				Electrical Rating				Strip Lead Width in (mm)	Approximate Net Wt.			Avail.	Code No.
Type 5 Heated Size		Type 6 & 8		Type 7 & 8		Power (Watts) ±5%	Surface Loading W/in <sup>2</sup> (W/cm <sup>2</sup> )		Type 5	Type 6 & 7	Type 8		
Width (A) in (mm) +½ - ⅛ (1.6-3.2)	Length (B) in (mm) +½ - ⅛ (1.6-3.2)	Width (C) in (mm) +½ - ⅛ (1.6-3.2)	Length (L) in (mm) +½ - ⅛ (1.6-3.2)	Volts						lbs (kg)	lbs (kg)	lbs (kg)	
4 (102)	6 (152)	8 (203)	10 (254)	60	275	11.5 (1.8)	⅜ (10)	0.6 (0.3)	1.1 (0.5)	1.7 (0.8)	Stock	<b>VF04A06S</b>	
	12 (305)	8 (203)	16 (406)	60	550	11.5 (1.8)	½ (13)	1.2 (0.5)	2.2 (1.0)	2.8 (1.3)	Stock	<b>VF_04A12S</b>	
	18 (457)	8 (203)	22 (559)	120	750	10.4 (1.6)	⅝ (10)	1.9 (0.9)	3.4 (1.5)	4.5 (2.0)	Standard	<b>VF_04A18S</b>	
	24 (610)	8 (203)	28 (711)	120	1100	11.5 (1.8)	½ (13)	2.4 (1.1)	4.4 (2.0)	5.6 (2.5)	Stock	<b>VF_04A24S</b>	
6 (152)	6 (152)	10 (254)	10 (254)	60	375	10.4 (1.6)	⅜ (10)	0.9 (0.4)	1.5 (0.7)	2.4 (1.1)	Stock	<b>VF_06A06S</b>	
	12 (305)	10 (254)	16 (406)	120	750	10.4 (1.6)	⅜ (10)	1.8 (0.8)	2.8 (1.3)	3.7 (1.7)	Stock	<b>VF_06A12S</b>	
	18 (457)	10 (254)	22 (559)	120	1250	11.6 (1.8)	½ (13)	3.0 (1.4)	4.1 (1.9)	5.0 (2.3)	Stock	<b>VF_06A18S</b>	
	24 (610)	10 (254)	28 (711)	240	1500	10.4 (1.6)	⅝ (10)	3.5 (1.6)	5.3 (2.4)	6.2 (2.8)	Stock	<b>VF_06A24S</b>	
	30 (762)	10 (254)	34 (864)	240	2000	11.2 (1.7)	½ (13)	4.5 (2.0)	6.6 (3.0)	8.4 (3.8)	Standard	<b>VF_06A30S</b>	
	36 (914)	10 (254)	40 (1016)	240	2500	11.6 (1.8)	½ (13)	6.1 (2.8)	8.3 (3.8)	10.2 (4.6)	Standard	<b>VF_06A36S</b>	
8 (203)	12 (305)	12 (305)	16 (406)	120	1100	11.5 (1.8)	½ (13)	2.5 (1.1)	3.2 (1.5)	4.1 (1.9)	Stock	<b>VF_08A12S</b>	
	18 (457)	12 (305)	22 (559)	240	1500	10.4 (1.6)	⅝ (10)	3.6 (1.6)	4.7 (2.1)	5.6 (2.5)	Stock	<b>VF_08A18S</b>	
	24 (610)	12 (305)	28 (711)	240	2200	11.5 (1.8)	½ (13)	4.8 (2.2)	6.5 (2.9)	7.4 (3.4)	Stock	<b>VF_08A24S</b>	
	30 (762)	12 (305)	34 (864)	240	2500	10.4 (1.6)	½ (13)	6.2 (2.8)	8.0 (3.6)	9.7 (4.4)	Standard	<b>VF_08A30S</b>	
	36 (914)	12 (305)	40 (1016)	240	3000	10.4 (1.6)	¾ (19)	7.8 (3.5)	10.0 (4.5)	11.8 (5.4)	Standard	<b>VF_08A36S</b>	
	10 (254)	12 (305)	14 (356)	16 (406)	240	1250	10.4 (1.6)	⅜ (10)	2.6 (1.2)	3.9 (1.8)	5.0 (2.3)	Stock	<b>VF_10A12S</b>
18 (457)		14 (356)	22 (559)	240	1800	10.0 (1.6)	½ (13)	4.2 (1.9)	5.4 (2.4)	6.5 (2.9)	Stock	<b>VF_10A18S</b>	
24 (610)		14 (356)	28 (711)	240	2500	10.4 (1.6)	½ (13)	5.2 (2.4)	7.7 (3.5)	8.8 (4.0)	Standard	<b>VF_10A24S</b>	
30 (762)		14 (356)	34 (864)	240	3000	10.0 (1.6)	¾ (19)	7.0 (3.2)	9.5 (4.3)	11.7 (5.3)	Stock	<b>VF_10A30S</b>	
36 (914)		14 (356)	40 (1016)	240	3600	10.0 (1.6)	¾ (19)	9.1 (4.1)	11.5 (5.2)	13.7 (6.2)	Standard	<b>VF_10A36S</b>	
12 (305)		12 (305)	16 (406)	16 (406)	240	1500	10.4 (1.6)	⅜ (10)	3.2 (1.5)	4.6 (2.1)	5.8 (2.6)	Stock	<b>VF_12A12S</b>
	18 (457)	16 (406)	22 (559)	240	2200	10.2 (1.6)	½ (13)	4.9 (2.2)	6.5 (2.9)	7.7 (3.5)	Stock	<b>VF_12A18S</b>	
	24 (610)	16 (406)	28 (711)	240	3000	10.4 (1.6)	¾ (19)	7.5 (3.4)	9.5 (4.3)	10.7 (4.9)	Stock	<b>VF_12A24S</b>	
	30 (762)	16 (406)	34 (864)	240	3600	10.0 (1.6)	¾ (19)	9.1 (4.1)	11.7 (5.3)	12.9 (5.9)	Standard	<b>VF_12A30S</b>	
	36 (914)	16 (406)	40 (1016)	240	4400	10.2 (1.6)	¾ (19)	12.4 (5.6)	15.5 (7.0)	16.7 (7.6)	Standard	<b>VF_12A36S</b>	
	14 (356)	12 (305)	18 (457)	16 (406)	240	1750	10.4 (1.6)	½ (13)	4.7 (2.1)	6.1 (2.8)	7.6 (3.4)	Standard	<b>VF_14A12S</b>
18 (457)		18 (457)	22 (559)	240	2550	10.6 (1.6)	½ (13)	6.8 (3.1)	8.5 (3.9)	10.0 (4.5)	Standard	<b>VF_14A18S</b>	
24 (610)		18 (457)	28 (711)	240	3500	10.4 (1.6)	¾ (19)	10.0 (4.5)	11.9 (5.4)	13.4 (6.1)	Stock	<b>VF_14A24S</b>	
30 (762)		18 (457)	34 (864)	240	4300	10.2 (1.6)	¾ (19)	12.5 (5.7)	15.0 (6.8)	16.5 (7.5)	Standard	<b>VF_14A30S</b>	
36 (914)		18 (457)	40 (1016)	240/240	5200	10.3 (1.6)	½ (13)	14.2 (6.4)	17.2 (7.8)	18.7 (8.5)	Standard	<b>VF_14A36S<sup>2</sup></b>	
16 (406)		12 (305)	20 (508)	16 (406)	240	2100	10.9 (1.7)	½ (13)	5.2 (2.4)	6.7 (3.0)	8.4 (3.8)	Standard	<b>VF_16A12S</b>
	18 (457)	20 (508)	22 (559)	240	3000	10.4 (1.6)	¾ (19)	8.2 (3.7)	9.9 (4.5)	11.6 (5.3)	Standard	<b>VF_16A18S</b>	
	24 (610)	20 (508)	28 (711)	240	4200	10.9 (1.7)	¾ (19)	11.9 (5.4)	13.8 (6.3)	15.5 (7.0)	Standard	<b>VF_16A24S</b>	
	30 (762)	20 (508)	34 (864)	240/240	5000	10.4 (1.6)	½ (13)	15.2 (6.9)	17.7 (8.0)	19.4 (8.8)	Standard	<b>VF_16A30S<sup>2</sup></b>	
	36 (914)	20 (508)	40 (1016)	240/240	6000	10.4 (1.6)	¾ (19)	17.9 (8.1)	20.9 (9.5)	22.6 (10.3)	Standard	<b>VF_16A36S<sup>2</sup></b>	

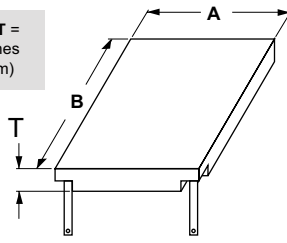
① Add Type number (Type 5 - 8) in the blank position in the code number. Example: **VF704A06S**. For unheated units, see catalog page 146. All units in this table are suitable for use up to **2000°F (1093°C)** maximum surface temperature.

② These units have dual elements, to be used in "parallel" for 240 volt usage. Alternate designs are available for 480 volt, 277 volt and three phase (internally wired). Consult factory.

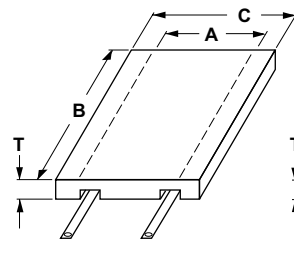
# Ceramic Fiber Products

## Ceramic Fiber Heaters

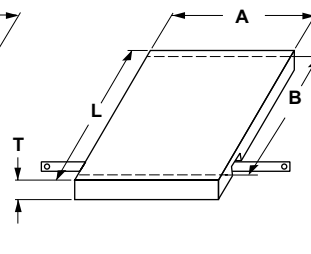
All units: T = 2 ± 1/4 inches (51 ± 6 mm)



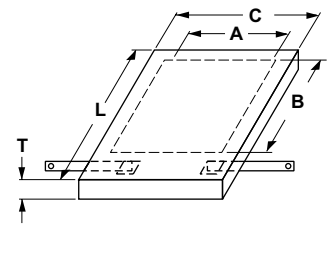
**Type 5 Fully Heated**  
(Style A Leads Illustrated)



**Type 6 Insulated Sides**  
(Style B Leads Illustrated)



**Type 7 Insulated Ends**  
(Style C Leads Illustrated)



**Type 8 Insulated All Edges**  
(Style C Leads Illustrated)

(Style A, B or C leads available on any type unit. Please specify.)

### Flat Units—High Watt Density Sinuated Elements (see page 142)

Dimensions, inches (mm)				Electrical Rating			Strip Lead Width in (mm)	Approximate Net Wt.			Avail.	Code No.
Type 5 Heated Size		Type 6 & 8	Type 7 & 8	Volts	Power (Watts) ±5%	Surface Loading W/in <sup>2</sup> (W/cm <sup>2</sup> )		Type 5	Type 6 & 7	Type 8		
Width (A) in (mm) +1/16 - 1/8 (1.6-3.2)	Length (B) in (mm) +1/16 - 1/8 (1.6-3.2)	Width (C) in (mm) +1/16 - 1/8 (1.6-3.2)	Length (L) in (mm) +1/16 - 1/8 (1.6-3.2)				lbs (kg)	lbs (kg)	lbs (kg)			
6 (152)	12 (305)	10 (254)	16 (406)	60	1250	17.4 (2.7)	1/2 (13)	1.7 (0.8)	2.7 (1.6)	3.6 (1.2)	Standard	VF <sup>Ⓢ</sup> 06A12T
	18 (457)	10 (254)	22 (559)	120	2000	18.5 (2.9)	1/2 (13)	2.6 (1.2)	3.7 (2.1)	4.6 (1.7)	Standard	VF_06A18T
	24 (610)	10 (254)	28 (711)	120	2500	17.4 (2.7)	1/2 (13)	3.2 (1.5)	5.0 (2.7)	5.9 (2.3)	Stock	VF_06A24T
	24 (610)	10 (254)	28 (711)	240	2500	17.4 (2.7)	1/2 (13)	3.2 (1.5)	5.0 (2.7)	5.9 (2.3)	Stock	VF_06A24U
	30 (762)	10 (254)	34 (864)	240	3400	18.9 (2.9)	1/2 (13)	4.5 (2.0)	7.1 (3.6)	7.9 (3.2)	Stock	VF_06A30T
	36 (914)	10 (254)	40 (1016)	240	4000	18.5 (2.9)	1/2 (13)	5.5 (2.5)	8.5 (4.2)	9.3 (3.9)	Standard	VF_06A36T
8 (203)	12 (305)	12 (305)	16 (406)	60	1800	18.7 (2.9)	3/4 (19)	2.3 (1.0)	3.0 (1.8)	3.9 (1.4)	Stock	VF_08A12T
	18 (457)	12 (305)	22 (559)	120	3000	20.8 (3.2)	3/4 (19)	3.5 (1.6)	4.6 (2.5)	5.5 (2.1)	Stock	VF_08A18T
	24 (610)	12 (305)	28 (711)	120	3600	18.7 (2.9)	3/4 (19)	4.4 (2.0)	6.1 (3.2)	7.0 (2.8)	Stock	VF_08A24T
	30 (762)	12 (305)	34 (864)	240	5000	20.8 (3.2)	1/2 (13)	6.1 (2.8)	8.7 (4.4)	9.7 (4.0)	Standard	VF_08A30T
	36 (914)	12 (305)	40 (1016)	240	6000	20.8 (3.2)	3/4 (19)	7.0 (3.2)	10.0 (5.0)	11.0 (4.5)	Standard	VF_08A36T
	10 (254)	12 (305)	14 (356)	16 (406)	120	2000	16.7 (2.6)	1/2 (13)	2.4 (1.1)	3.7 (2.2)	4.8 (1.7)	Stock
18 (457)		14 (356)	22 (559)	120	3600	20.0 (3.1)	3/4 (19)	4.0 (1.8)	5.2 (2.9)	6.3 (2.4)	Stock	VF_10A18T
24 (610)		14 (356)	28 (711)	240	4500	17.9 (2.8)	3/4 (19)	4.7 (2.1)	7.2 (3.8)	8.3 (3.3)	Stock	VF_10A24T
30 (762)		14 (356)	34 (864)	240	6000	20.0 (3.1)	3/4 (19)	6.7 (3.0)	9.3 (4.8)	10.5 (4.2)	Standard	VF_10A30T
36 (914)		14 (356)	40 (1016)	240	7200	20.0 (3.1)	3/4 (19)	8.5 (3.9)	11.5 (5.8)	12.7 (5.2)	Standard	VF_10A36T
12 (305)		12 (305)	16 (406)	16 (406)	120	2500	17.4 (2.7)	1/2 (13)	2.9 (1.3)	4.3 (2.5)	5.5 (2.0)	Stock
	12 (305)	16 (406)	16 (406)	240	2500	17.4 (2.7)	3/8 (10)	2.9 (1.3)	4.3 (2.5)	5.5 (2.0)	Stock	VF_12A12U
	18 (457)	16 (406)	22 (559)	240	4000	18.5 (2.9)	1/2 (13)	4.5 (2.0)	6.1 (3.3)	7.3 (2.8)	Stock	VF_12A18T
	24 (610)	16 (406)	28 (711)	240	6000	20.8 (3.2)	3/4 (19)	6.6 (3.0)	8.6 (4.4)	9.8 (3.9)	Stock	VF_12A24T
	30 (762)	16 (406)	34 (864)	240	7200	20.0 (3.1)	3/4 (19)	8.6 (3.9)	11.2 (5.7)	12.6 (5.1)	Standard	VF_12A30T
	36 (914)	16 (406)	40 (1016)	240/240	8400	19.4 (3.0)	3/4 (19)	10.2 (4.6)	13.2 (6.6)	14.6 (6.0)	Standard	VF_12A36T <sup>Ⓢ</sup>
14 (356)	12 (305)	18 (457)	16 (406)	120	3500	20.8 (3.2)	3/4 (19)	4.2 (1.9)	5.3 (3.0)	6.7 (2.4)	Standard	VF_14A12T
	18 (457)	18 (457)	22 (559)	240	4900	19.4 (3.0)	1/2 (13)	6.1 (2.8)	7.6 (4.1)	9.1 (3.4)	Standard	VF_14A18T
	24 (610)	18 (457)	28 (711)	240	7000	20.8 (3.2)	3/4 (19)	8.5 (3.9)	10.5 (5.4)	11.9 (4.8)	Standard	VF_14A24T
	30 (762)	18 (457)	34 (864)	240/240	8400	20.0 (3.1)	3/4 (19)	10.7 (4.9)	13.2 (6.6)	14.6 (6.0)	Standard	VF_14A30T <sup>Ⓢ</sup>
	36 (914)	18 (457)	40 (1016)	240/240	9800	19.4 (3.0)	1/2 (13)	12.2 (5.5)	15.2 (7.5)	16.6 (6.9)	Standard	VF_14A36T <sup>Ⓢ</sup>
	16 (406)	12 (305)	20 (508)	16 (406)	120	3550	18.5 (2.9)	3/4 (19)	4.7 (2.1)	5.7 (3.4)	7.4 (2.6)	Standard
18 (457)		20 (508)	22 (559)	240	5750	20.0 (3.1)	3/4 (19)	7.1 (3.2)	8.6 (4.7)	10.3 (3.9)	Standard	VF_16A18T
24 (610)		20 (508)	28 (711)	240	7100	18.5 (2.9)	3/4 (19)	9.5 (4.3)	11.5 (6.0)	13.2 (5.2)	Standard	VF_16A24T
30 (762)		20 (508)	34 (864)	240/240	9600	20.0 (3.1)	1/2 (13)	11.7 (5.3)	14.2 (7.2)	15.9 (6.4)	Standard	VF_16A30T <sup>Ⓢ</sup>
36 (914)		20 (508)	40 (1016)	240/240	11500	20.0 (3.1)	3/4 (19)	14.2 (6.4)	17.2 (8.6)	18.9 (7.8)	Standard	VF_16A36T <sup>Ⓢ</sup>

① Add Type number (Type 5 - 8) in the blank position in the code number. Example: VF<sup>Ⓢ</sup>06A12T. For unheated units, see catalog page 146.  
 Sinuated wire, high watt density units are provided with embedded sinuated elements and high emissivity coating, unless exposed sinuated is specified when manufactured. (These are **not stocked**.) Consult factory.  
 All units in this table are suitable for use up to **1800°F (982°C)** maximum surface temperature.  
 ② These units have dual elements, to be used in "parallel" for 240 volt usage. Alternate designs are available for 480 volt, 277 volt and three phase (internally wired). Consult factory.